

2-Point Perspective Tree House

Level: 5th and up

Duration: 6 class periods

Media: Watercolor/Watercolor Pencil

Objective: As a result of this experience, the students will learn about 2-point perspective by creating a dream tree house.

Materials:

80# White Paper 12"x18"

Newsprint or Manilla Paper 12"x18"

Ultra Fine black Sharpie

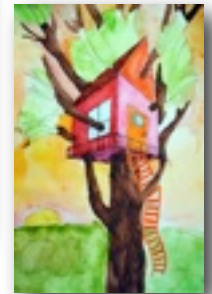
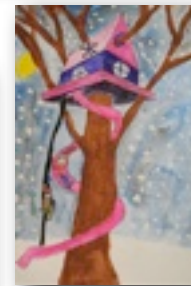
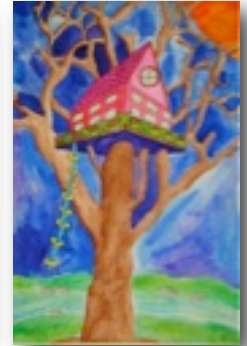
Ruler

Masking Tape

Pencil/Eraser

Watercolors/brushes

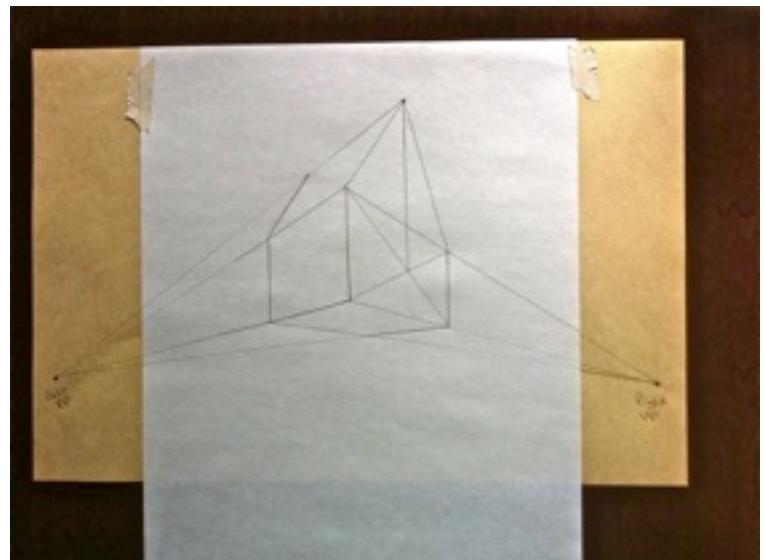
Watercolor Pencils



See more student images at:
tinyurl.com/4yulxba

Procedure: (steps to cover complete project, break down to fit your class schedule accordingly)

1. Introduce the lesson through the work of treehouse artists. Online resource: tinyurl.com/6elttwy
Discuss structural stability, architectural design, environmental impact, purpose, etc.
2. Incorporate 2-point perspective. Use a photo of school taken in 2-point perspective and display on screen. Use computer to draw straight lines over edges to demonstrate orthogonal lines/converging lines at vanishing points.
3. Set up paper. Since paper is aligned vertically, additional room is needed to place vanishing points . . . Set up white paper with manilla paper behind in the shape of a "T" attached with tape. (see illustration on right)
4. Draw a vanishing point on each side of manilla paper low on page.
5. Starting about 4"-5" from the top, draw a 3" vertical line to create closest corner of treehouse. (make sure lower edge of 3" line ends significantly above vanishing points)
6. Draw from top sides of line to each vanishing point and then again from bottom side toward vanishing points creating orthogonal lines.



7. Drop vertical lines on each side between orthogonal lines to create left and right edges of treehouse. Erase unneeded portion of orthogonal lines.
8. To create underside of treehouse . . . find spot where left side vertical intersects with lower orthogonal line. From this point use ruler to draw line toward right vanishing point. Do same steps from right side toward left vanishing point. Erase unnecessary lines.
9. To add roof, have students create an "X" from corner to corner of one side of house. Draw a vertical line from intersection and drop down sides to form triangle (see illustration). From top of triangle, use ruler to make an orthogonal line go toward vanishing point. End roof by drawing parallel line matching front edge of roof.
10. Demonstrate how to add windows, railings, platforms, etc. using 2-point perspective.
11. Demonstrate how to create a tree that enters the bottom of treehouse and extends to support the treehouse. Encourage branches to overlap treehouse.
12. Add any other details (rope swing, birds, etc) Tip for younger students or modification for older students: Once all major details have been added use ultra fine black sharpie to go over edges on treehouse so that none of the important edges get lost as color is added.
13. Have students do a light color wash with watercolor in sky and ground.
14. Choose a light source. Demonstrate how to color treehouse with varied color intensities using watercolor pencil. Blend watercolor pencil with water. Show same technique for tree branches to give illusion of depth.
15. Add texture with watercolor pencil.

As an extension for early finishers, show DVD *Empire of the Eye: The Magic of Illusion*
<http://tinyurl.com/EmpireEye>

Vocabulary:

Perspective, Vanishing Point, orthogonal lines, intensity, depth, texture

Assessment:

Treehouse 				
	Excellent! 3 pts	Good 2 pts	Fair 1 pts	Poor 0 pts
Perspective Students demonstrate 2-Point perspective	Excellent! All orthogonal lines converge at correct vanishing points.	Good Most orthogonal lines converge at correct vanishing points	Fair Few orthogonal lines converge at correct vanishing points	Poor No orthogonal lines converge at correct vanishing points
Drawing Craftsmanship Level of accuracy while drawing treehouse.	Excellent! Vertical lines are vertical. Ruler was used for all straight lines. Edges are clear and easy to identify.	Good Most vertical lines are vertical. Ruler was used for most straight lines. Edges are somewhat clear and easy to identify.	Fair Few vertical lines are vertical. Ruler was rarely used to create straight lines. Edges difficult to see.	Poor No vertical lines are vertical. Ruler was never used to create straight lines. Edges difficult to recognize.
Watercolor Craftsmanship Level of accuracy while adding color elements.	Excellent! Watercolor paint and watercolor pencil were always used carefully to create a pleasing aesthetic.	Good Watercolor paint and watercolor pencil were mostly used carefully to create a pleasing aesthetic.	Fair Watercolor paint and watercolor pencil were rarely used carefully. Outcome appears sloppy or unfinished.	Poor No watercolor paint or watercolor pencil was used. Outcome appears sloppy and unfinished.
Creativity	Excellent! Added multiple unique details. Many original ideas were used.	Good Added some unique details. Some ideas were original.	Fair Few details were added. Ideas were not original.	Poor No details were added.

Access this rubric online to copy and customize: <http://tinyurl.com/TreeRubric>

Theresa McGee
 Monroe Elementary
<http://tinyurl.com/MonroeArt>
tmcgee@d181.org